



about us

At the heart of our business is the most pressing issue of modern life - Environment. We endeavor for a greener future for our generations to come and this remains our primary goal under the banner of Proplast.

We are actively engaged in the reprocessing of Plastic Materials at our state-of-the-art plant located in Umm Al Quwain, some 40 kilometers to the North of Dubai, United Arab Emirates. We produce various materials including PE & PP granules and regrind versions of rigid plastics including HDPE, PP, PVC, PPRC, PC, and PET.

Our dynamic team of professionals is continuously busy striving, to not only reduce the plastic waste burden from the environment, but also find sustainable solutions to reprocess the plastic waste to make it ever more useful for the plastics industry.

We have a strong base of satisfied customers spanning over the Middle East, Europe, and Asia. Please read through the ensuing pages and see how we can join hands for the noble cause of not only protecting our precious environment but also supporting the circular economy, sustainability, and economic opportunity for countless people directly or indirectly involved in this industry and beyond.

Products & Materials

➤ **V**irgin Plastics Raw Materials

➤ Polyethylene (PE) Granules

- Low-density Polyethylene (LDPE)
- Linear Low-Density Polyethylene (LLDPE)
- High-Density Polyethylene (HDPE)



➤ Polypropylene (PP) Granules

- Homopolymer
- Random Copolymer
- Impact Copolymer



➤ PET Virgin Resin

- Bottle Grade
- Film Grade
- Textile Grade



➤ Recycled Plastics Raw Materials:

We have both Post-Industrial and Post-Consumer waste material as follows.

Post-Industrial Material

- PET Bottle Re grind (Clear and Light Blue Mix)



- PET Preform Re grind (Clear, Light Blue & Green)



- **PET Sheet Regrind Material (Clear) (Sheet Grade)**



- **HDPE Blow Grade Regrind Material (Jerry Cans & Oil Cans)**



- HDPE Injection Grade Regrind Material (Pallets & Crates)



- **PP Bucket Regrind Material (All Mixed Colors)**



- **PET Lumps (PET Preform and PET Sheet Grade)**

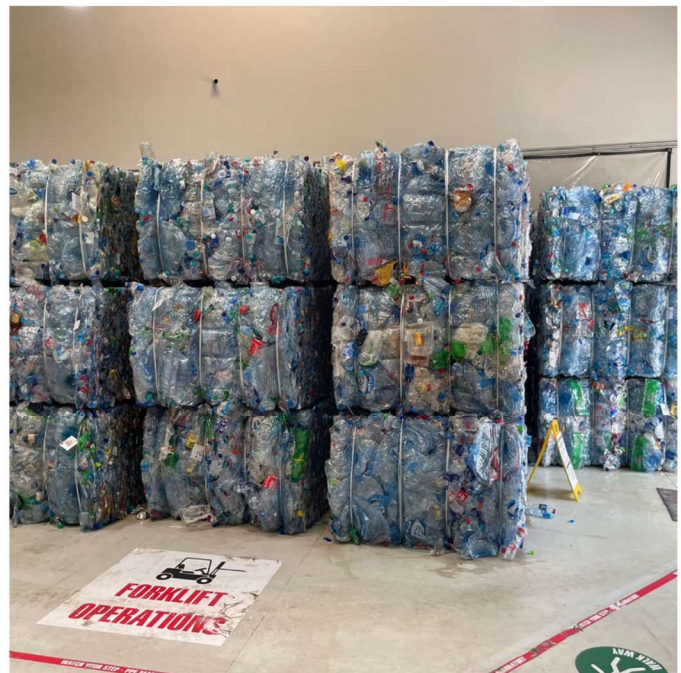


- Polycarbonate (PC Bottle & Sheet) Regrind Material

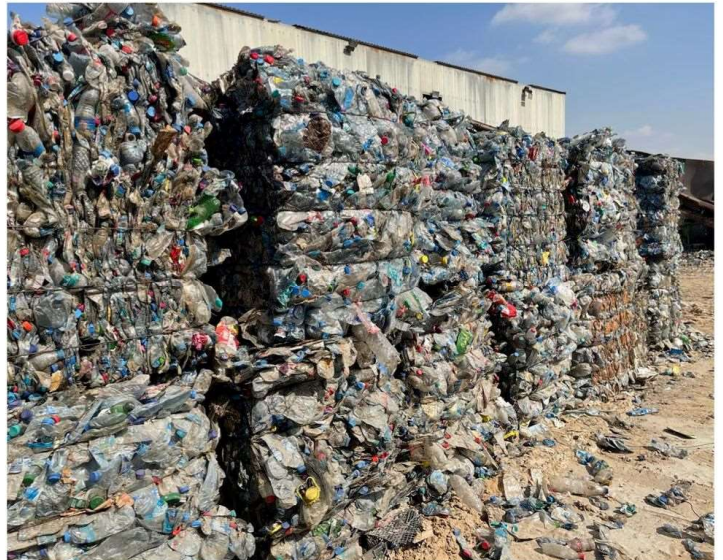


Post-Consumer Material

- PET Bottles Scrap in Bale Form (Clear, Light Blue & Green) (A-Grade)



- **PET Bottles Scrap in Bale Form (Clear, Light Blue & Green) (MRF Collection B-Grade)**



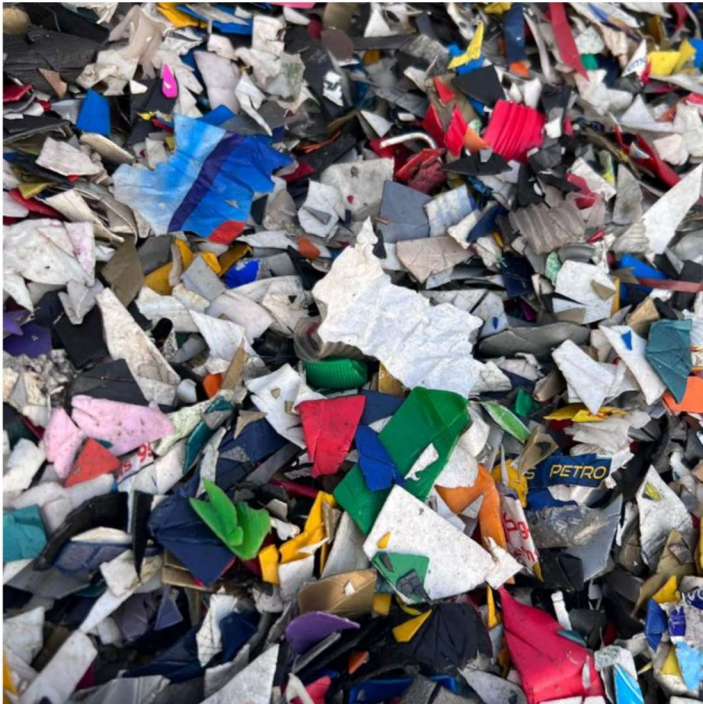
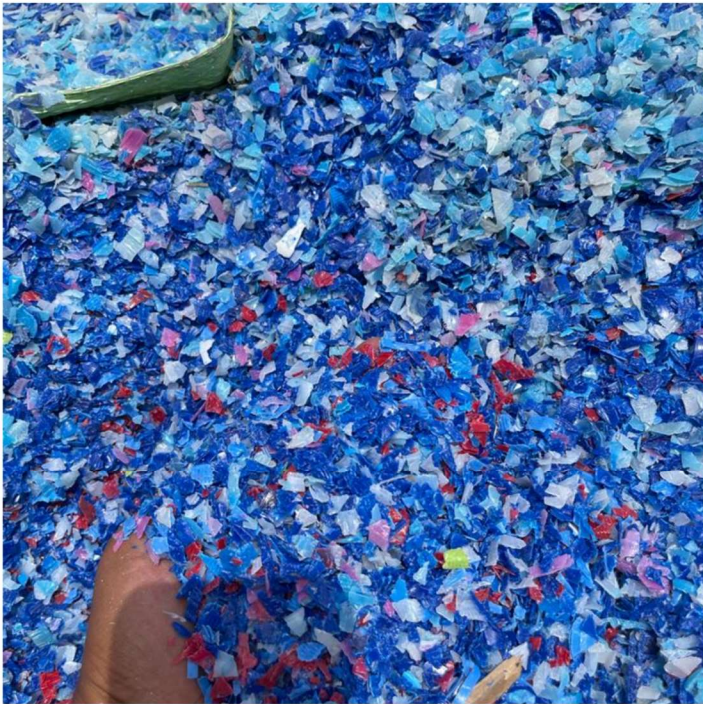
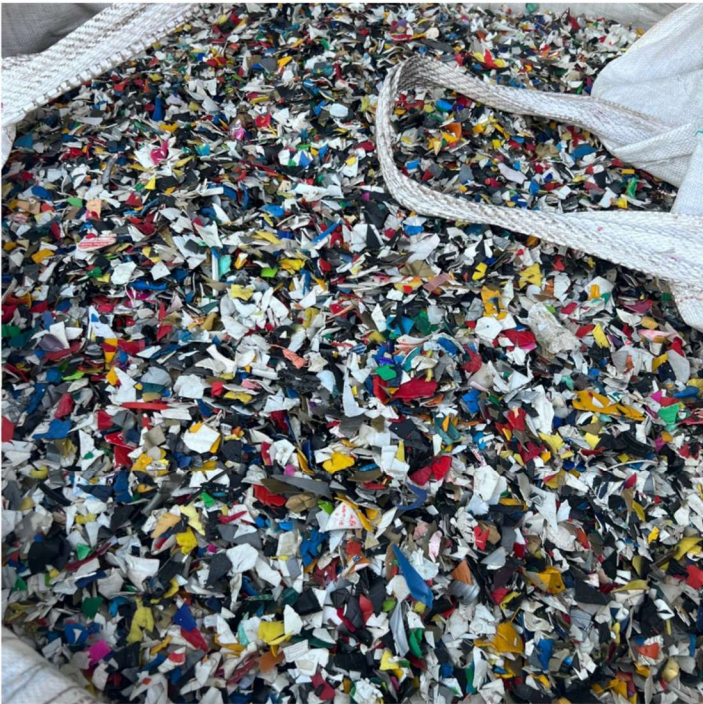
- **PET Bottle Flakes (Hot Washed & Cold Washed)**



- **HDPE Blow Material in Baled Form (Post Consumer Waste)**



- HDPE Blow Grade Regrind Material (Hot Washed)



- **PP Jumbo Bags Scrap (Broken) For PP Raffia Granules**



- **PP Jumbo Bags (For Reuse / Repacking)**

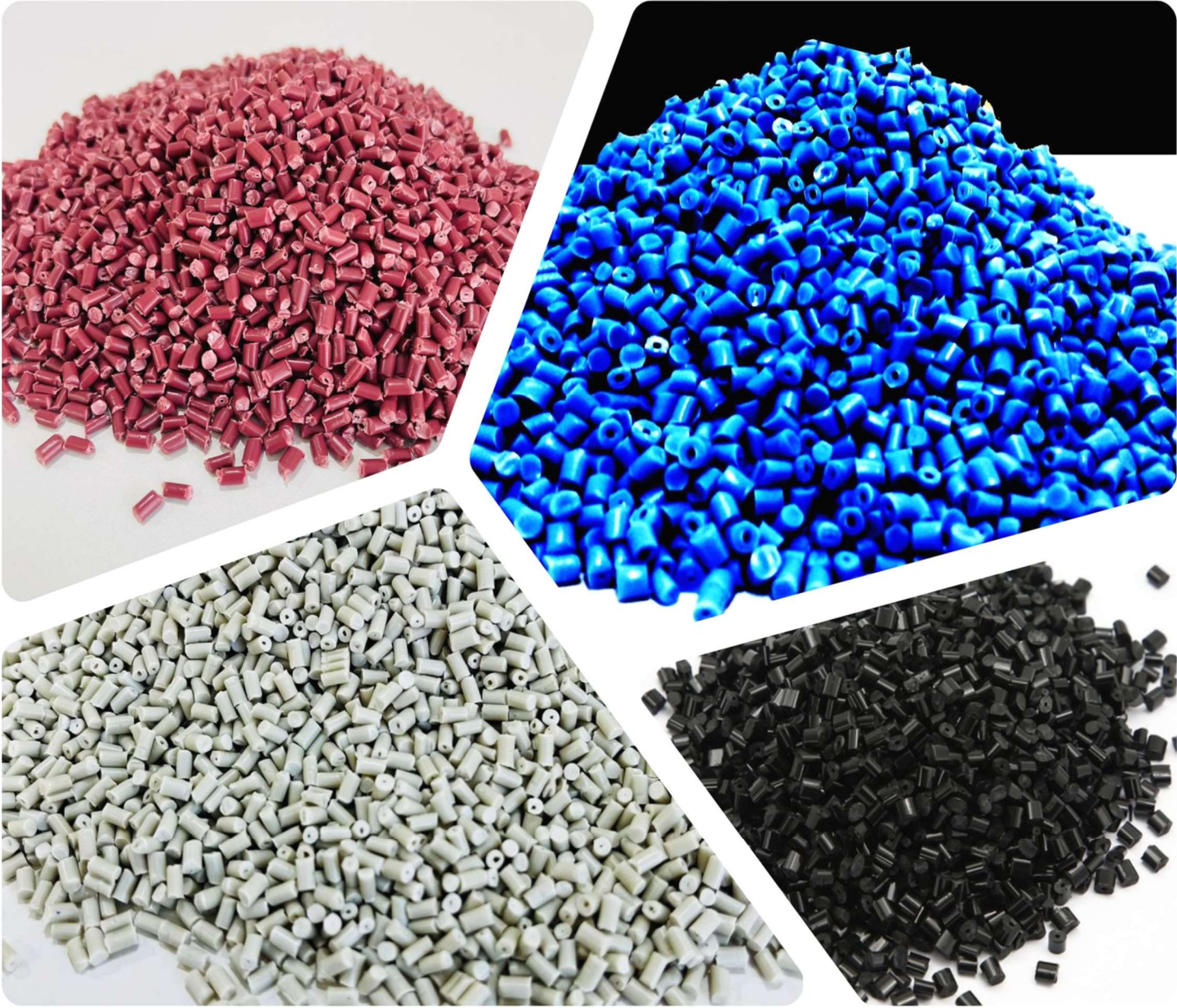


Recycled/ Reprocessed Granules

- LDPE/LLDPE Film Grade Natural and Dull Natural (Thread Cutting and Face Cutting)



- **PP Granules Injection Grade/ (Raffia Grade)**



CONTACT US



Name: Ahmad Haseeb

Designation: Chief Executive Officer



Name: Ali Ahmed Faruqi

Designation: Business Dev. Executive



Our Addresses & Contact Info

Head Office: Level 03, Boulevard Plaza, Sheikh M. Bin Rashid Boulevard, Downtown Dubai, UAE



+971 445 58454



+971 55 358 2246



ali.ahmed@proplastllc.com

Factory/Site: Plot No. 1589, Al Raafah Sector, Umm Dera, New Industrial Area, Umm Al Quwain, UAE



+971 445 58454



+971 52 438 4062



ceo@proplastllc.com

UK Office: 34 Mornington Road, Smethwick, West Midlands, B66 2JE, United Kingdom



+44 7886 010373



ops@proplastllc.com